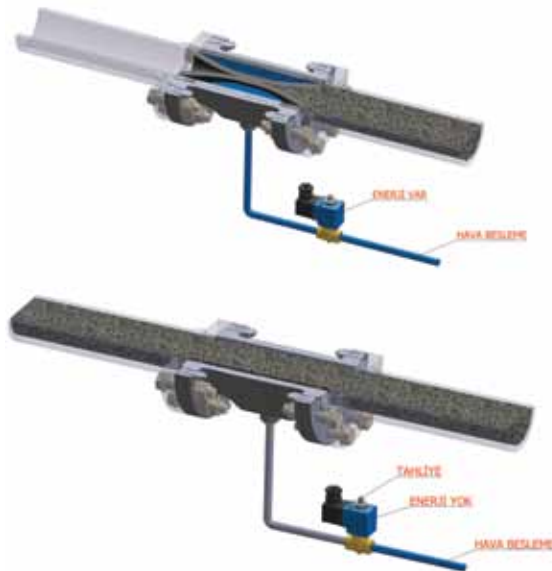




**PINCH (FLEXIBLE) VALVE**

[www.smstork.com](http://www.smstork.com)



Valve solution for abrasive, corrosive and granules containing fiber, dust substances and cellulose.

**Advantages :**

- Barrier -Free product flow
- The lack of risk of clogging
- Minimum air consumption
- Long-life sealing
- Lightness
- Maintenance worker



**Mode of Operation :**

It is passed to  $p=2$  bars (min) the valve body off air, then high recoil flexibility hose constricts the gasket in the form of lips, so that valve closes and seals as seen in the image and sealing is provided at the rate of 100%. Unlike other valves, it shows for a long time, to abrasion resistance and tolerant.

**Models :**

We have our own production valve completely with a wide variety of materials , flange type and is used in many application areas with quality tires.

In addition, different application areas and the series specially designed for valve manufacture in.

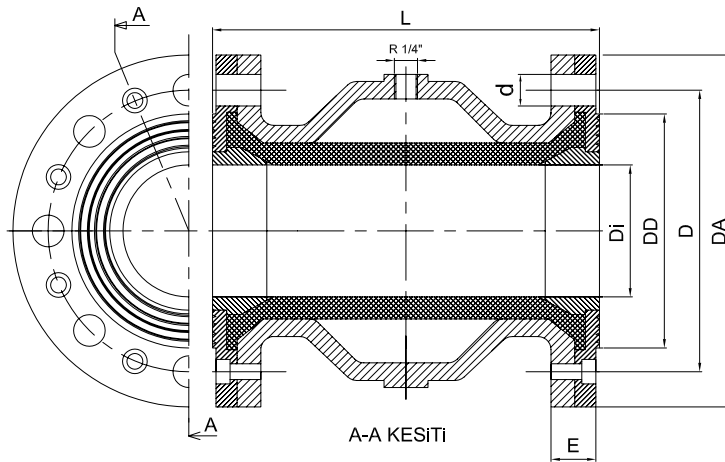
Safely is used vacuum, pressure, explosion risk, and poison gas environments with optional controls.

**Application Areas :**

- Pneumatic conveyor systems
- Cement industry
- Pigment /granule handling systems
- Ceramic/ glass /plastic industry
- Water purification systems
- Pharmaceutical / foog industry
- Wine industry
- Vacuum toilet systems
- Dosing and weighing systems
- Vacuum conveyor systems

**PINCH VALVE ( FLANGED TYPE )**

- Body** : Aluminum casting , stainless steel , steel ( DN300-DN400-DN500)  
**Flange** : Aluminum casting , stainless steel / steel sleeve aluminum casting, steel ( DN300-DN400-DN500)  
**Sealing Rubber** : Abrasion resistant naturel rubber , foofg grade natural rubber , the natural rubber for high temperature , nitrile rubber , EPDM, silicon  
**Optional Accessories** : Solenoid valves, pressure switches , filters, regulators , carrying unit , safety valves, proportional valves.

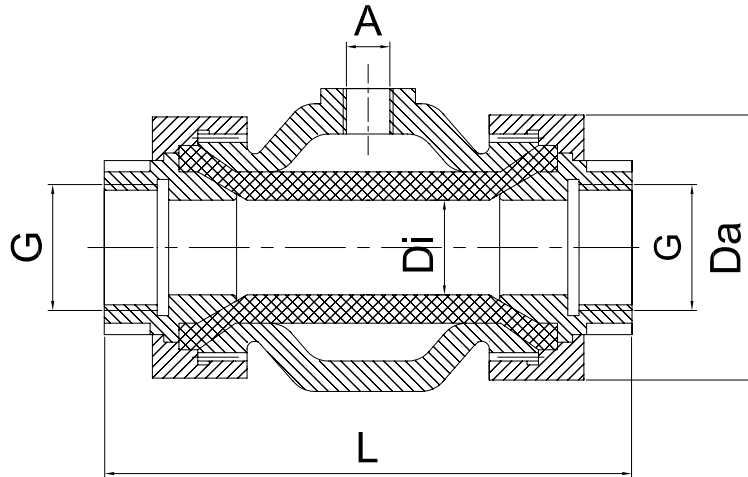


**TORK - PF Series Pinch Valve with Flange Connection**

Order /Type Code	DN		ØDI	ØDD	ØDA	Ød	Delik Sayısı	ØD	E	L
	inch	mm	mm	mm	mm	mm	adet	mm	mm	mm
TORK-PF.07.400.E	1 1/2	40	40	88	150	18	4	110	30	155
TORK-PF.08.600.E	2	50	60	102	165	18	4	125	30	166
TORK-PF.09.600.E	2 1/2	65	60	122	185	18	4	145	30	183
TORK-PF.10.750.E	3	80	75	133	200	18	8	160	30	220
TORK-PF.12.1000.E	4	100	100	158	220	18	8	180	30	280
TORK-PF.17.1200.E	5	125	120	184	250	18	8	210	38.5	348
TORK-PF.18.1450.E	6	150	145	212	285	22	8	240	42	418
TORK-PF.20.1900.E	8	200	190	268	340	22	8	295	58.5	555
TORK-PF.23.2500.E	10	250	250	300	390	22	12	350	65	610
TORK-PF.24.2900.E	12	300	290	370	445	22	12	400	66	726
TORK-PF.25.3900.E	16	400	390	482	565	26	16	515	80	804
TORK-PF.26.4900.E	20	500	490	585	670	26	16	620	80	960

**PINCH VALVE ( THREADED TYPE )**

- Body** : Aluminum casting , stainless steel , steel ( DN300-DN400-DN500)  
**Sealing Rubber** : Abrasion resistant naturel rubber , foofg grade natural rubber , the natural rubber for high temperature , nitrile rubber , EPDM, silicon  
**Optional Accessories** : Solenoid valves, pressure switches , filters, regulators , carrying unit , safety valves, proportional valves.



**TORK - PF Series Threaded Pinch Valve**

Order / Type Code	ØDN	ØG	ØDI	L	ØDA	ØA
	mm	mm	mm	mm	mm	mm
TORK-PD.03.150.E	15	1/2	15	135	60	1/8
TORK-PD.04.200.E	20	3/4	20	142	60	1/4
TORK-PD.05.250.E	25	1	25	145	75	1/4
TORK-PD.06.320.E	32	1 1/4	32	170	90	1/4
TORK-PD.07.400.E	40	1 1/2	40	200	110	1/4
TORK-PD.08.500.E	50	2	50	220	120	1/4